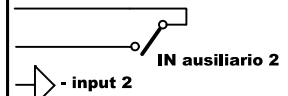
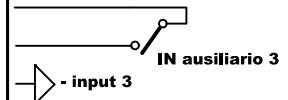
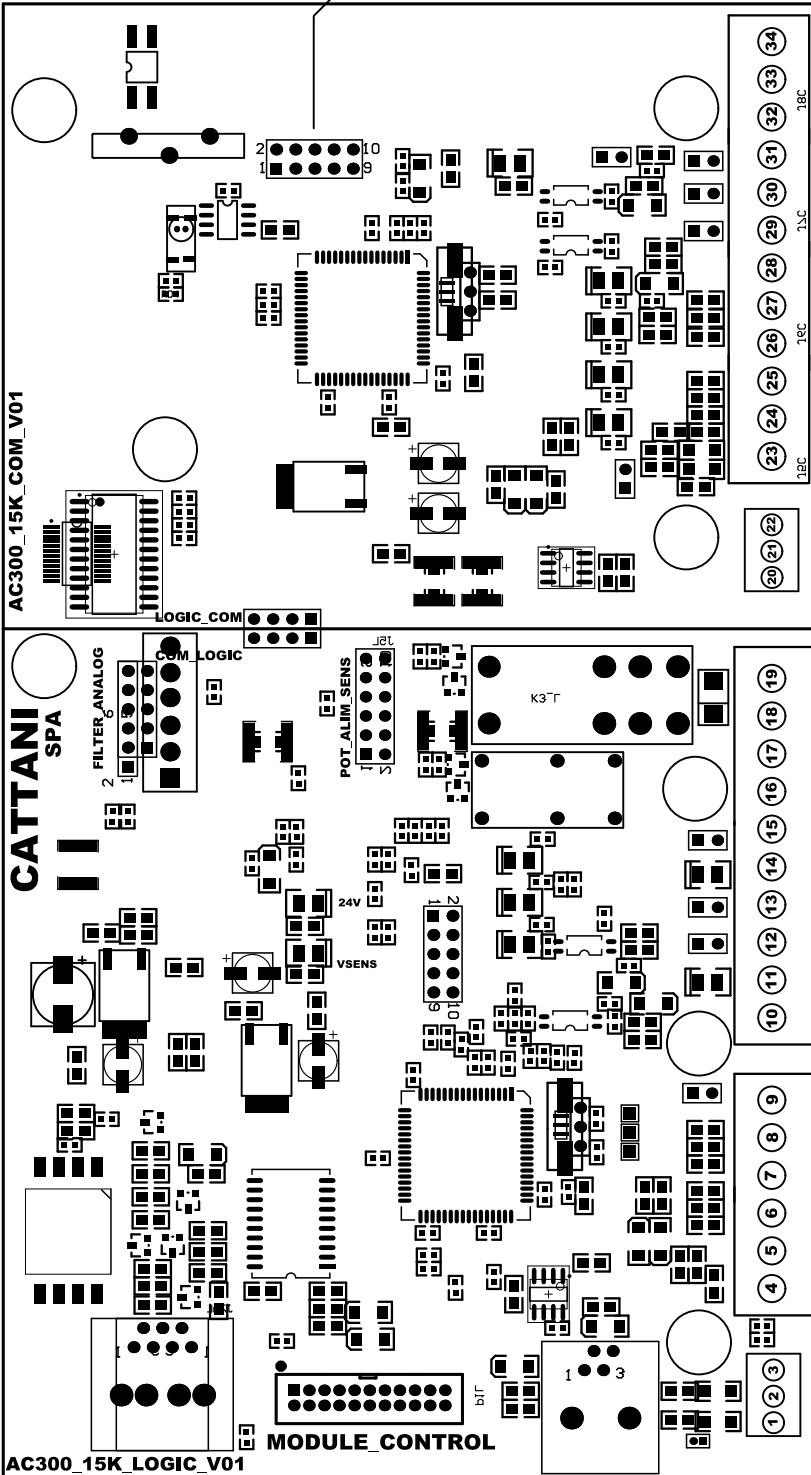


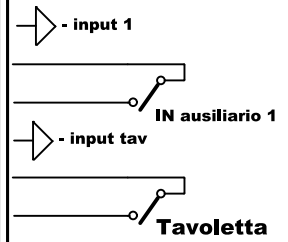
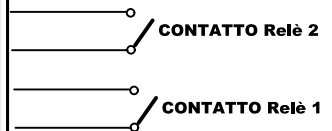
Porta Mestore Microcontrollore
Da collegare con JTAGICE 3

AC300_15K_V01



- + ANALOGICA AUX_3**
- ANALOGICA AUX_3**
- ANALOGICA AUX_3**
- + ANALOGICA AUX_2**
- ANALOGICA AUX_2**
- ANALOGICA AUX_2**

Comunicazione_2_SERIALE 485



- + ANALOGICA VUOTO ESTERNO**
- ANALOGICA VUOTO ESTERNO**
- ANALOGICA VUOTO ESTERNO**
- + ANALOGICA AUX_1**
- ANALOGICA AUX_1**
- ANALOGICA AUX_1**

Comunicazione_1_SERIALE 485

PL1
Comunicazione LCD

PL2
Comunicazione Lettore amalgama AC86C